

Contents

Introduction

[About BYTE on CD-ROM](#)

[Anatomy of the main window](#)

Controls

[Right mouse button controls](#)

[Toolbar controls](#)

[Menu controls](#)

Searching BYTE on CD-ROM

[About search](#)

[Anatomy of the search dialog](#)

[Search techniques](#)

Navigating BYTE on CD-ROM

[About navigation](#)

[Anatomy of the table of contents](#)

[Navigational techniques](#)

Printing and exporting

[Selecting what to print or export](#)

About BYTE on CD-ROM

BYTE on CD-ROM contains the complete text of BYTE from 1990-1994, plus text and graphics from 1995 and future issues.

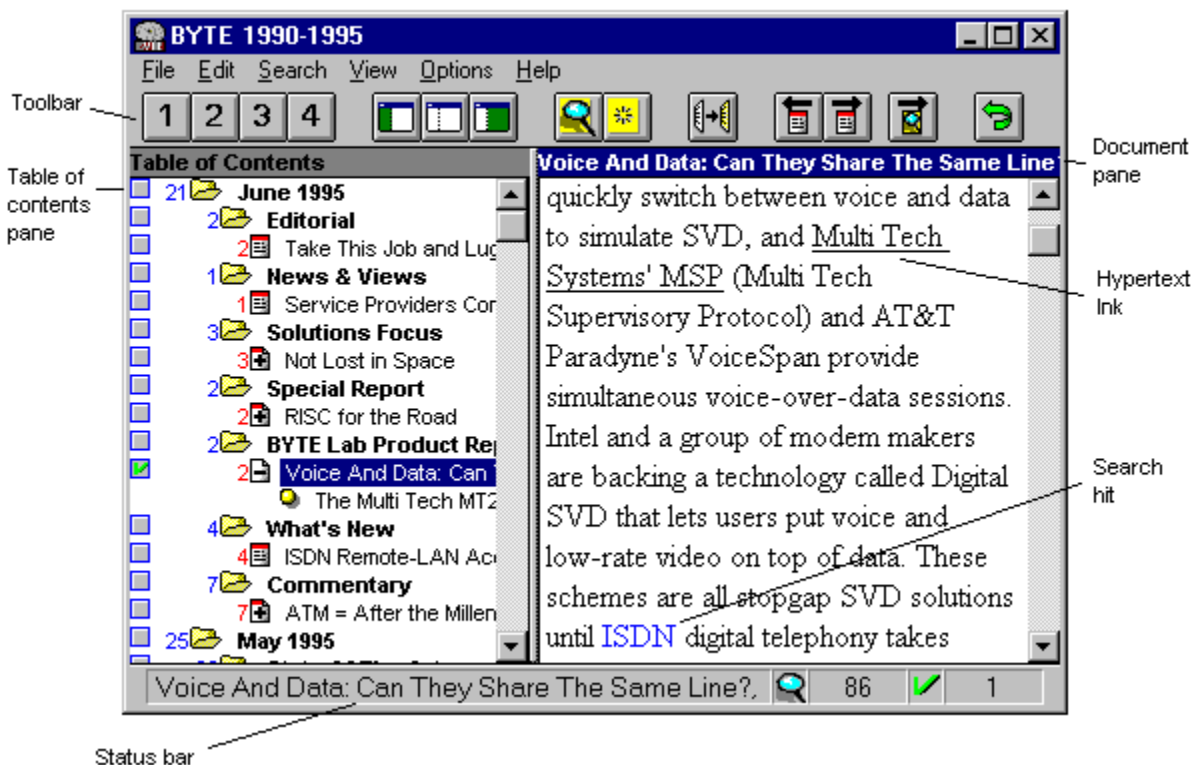
The graphics viewing software is licensed from Accusoft.

Anatomy of the main window

The application runs in a single main window split in two panes: the *table of contents pane*, and the *document pane*. A slider adjusts the boundary between the two panes.

Toolbar buttons give access to common functions. If the cursor is on a toolbar button, the *status bar* reports its function. Otherwise, the status bar reports the issue, section, and title of the current document. The status bar also reports the number of documents found in a search, and the number of documents selected for print or export.

The title bar of the document pane reports the title of the current document.



Right mouse button controls

New with the Q3 1995 disc. Use the right mouse button to pop up a context-sensitive local menu.

Related Topics:

[From the table of contents pane you can:](#)

[From the document pane you can:](#)

From the table of contents pane you can:

Fully expand the current node

Use the global level controls (1,2,3,4)

Toggle title hints

Clear a selection

Maximize the table of contents or document panes

From the document pane you can:

Change fonts

Toggle image dithering

Annotate the current article

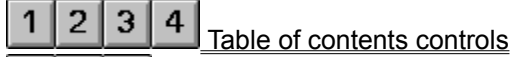
Maximize the table of contents or document panes

Toolbar controls



The toolbar gives instant access to common functions:

Related Topics:



1 2 3 4 **Table of contents controls**

These buttons control the level of expansion of the table of contents:

- 1 - Issue level (e.g. December 1994)
- 2 - Section level (e.g. Reviews)
- 3 - Article level (e.g. Four Color Printers)
- 4 - Attachment level (tables, figures, photos)



Window controls



Maximize table of contents. Useful for viewing search results.



Restore default view of table of contents and document.



Maximize document. Useful for viewing large tables or graphics.



Search controls



Begin a new search. When complete, table of contents reduces to display only matching documents.



Clear a search. Restore the table of contents to its normal, fully-expanded state. (Appears grayed unless a search is in effect.)



Document controls



Copy selected region of document to clipboard. (Appears grayed unless a region is selected.)



Go to next document.



Go to previous document.



Go to next search hit.



Go to previous search hit.



Undo hypertext jump. (Appears grayed unless a hypertext link has been followed.)



Print documents.



Annotate the current document. (Appears "pushed in" if the current document already has an annotation attached to it.)

Menu controls



Related Topics:

[File menu](#)

[Edit menu](#)

[Search menu](#)

[View menu](#)

[Options menu](#)

[Help menu](#)

File menu

Print - First, you select what to print: documents (default) or the table of contents. If you ask to print documents, you then select either the current article (default), or the items checked in the table of contents, or all items shown in the table of contents. Click OK to print.

Print Setup - Select a new printer, or change the settings of the current printer.

Export - As with Print, first select whether to print documents or the table of contents. If documents, select current, marked, or all. Click OK to save the selection as an ASCII text file.

Exit - Exit BYTE on CD-ROM.

Edit menu

Copy - Copy a highlighted region of a document to the clipboard.

Clear Selection - Remove all checkmarks indicating documents selected for export or print.

Annotate - Attach a note to the current document.

Goto annotation - Display the list of annotations. Click on an annotation to go to its associated document.

Search menu

New search - Begin a new search. When complete, the table of contents will reduce to display only those documents found.

Clear search - Restore the table of contents to its original, fully-expanded state.

History - Display a list of searches performed during the current session. Click on an item to recall the configuration established by that previous search.

Previous document - Go back one document.

Next document - Go forward one document.

Next hit - Go to the next paragraph containing a search hit, crossing document boundaries as needed.

Go back - Undo a hypertext jump.

View menu

Switch pane - Change focus from the table of contents pane to the document pane, or vice versa.

Level 1 - Summarize table of contents by issue. (This is the default when there is no search in effect.) Useful for quickly identifying an issue of BYTE that matches a search.

Level 2 - Summarize table of contents by issue and section.

Level 3 - Summarize table of contents by issue, section, and document. (This is the default after a search.)

Level 4 - Show complete table of contents: issues, sections, titles, documents, and attachments.

Split view - Allows keyboard control of the slider that separates the table of contents pane from the document pane. When the slider highlights, use the left and right arrow keys to move it, and use ENTER to set the new position.

Table of contents only - Expand the table of contents pane to the full width of the main window. Useful for browsing long titles.

Table of contents and document - Restore the normal two-pane display.

Document only - Expand the document pane to the full width of the main window. Useful for viewing large images.

Options menu

Fonts - Adjust the fonts used for the text elements shown in the document pane.

Show toolbar - Toggle display of toolbar off, or back on.

Show status bar - Toggle display of status bar off, or back on.

Use image dithering - If your display supports more than 256 colors, turn this option off for best-quality display of photographic images.

Show title hints - Toggles context-sensitive display of table-of-contents titles.

Help menu

Contents - View this help file.

Using help - View help about help.

About - Information about the developers of BYTE on CD-ROM.

About search

BYTE on CD-ROM supports Boolean search:

Ethernet and switch PRI or BRI Apple andnot Macintosh

phrase search:

switching hub

proximity search:

Ethernet within/30 switch

and wildcard search:

Ethernet within/30 switch*

You can also build more complex expressions using parentheses:

Apple within/10 (IBM or Motorola)

You can search just in document titles, or in the full text of documents and tables.

You can search the whole database from 1990 to the present or, for faster results, just the portion from 1994 onward.

You can search all sections of BYTE (Reviews, State of the Art, What's New, etc.) or just selected sections.

Anatomy of the search dialog

The image shows a 'Full text search' dialog box with several annotated parts:

- Search for:** A text input field containing the search expression 'ethernet within/30 switch'. A callout points to this field with the text: 'Type your search expression here.'
- Search operators:** Four buttons labeled 'and', 'within', 'or', and 'andnot' are located below the search field. A callout points to these buttons: 'Use these buttons to insert search operators into the edit box. Or, just type them in directly.'
- Search scope:** A section titled 'Search in:' contains three radio buttons: 'Full text' (selected), 'Titles only', and 'Tables only'. A callout points to the 'Full text' option: 'Usually you'll want to search the full text.'
- Search scope:** A callout points to the 'Titles only' option: 'Sometimes it's handy -- and much faster -- to search titles only.'
- Search scope:** A callout points to the 'Tables only' option: 'Occasionally you may want to search tables only.'
- Recent search:** A checkbox labeled '95/94 only' is located at the bottom left. A callout points to it: 'Use this option to speed the search when the information you're looking for is recent.'
- Include Sections:** A list box on the right contains a scrollable list of sections: 'Ask BYTE', 'Beyond DOS', 'Blasts From The Past', 'Book and CD-ROM Reviews', 'Business Connection', 'BYTE 20 Years', 'BYTE Lab Product Report', 'Chaos Manor Mail', 'Commentary', and 'Core Technologies'. A 'Deselect All' button is located below the list. A callout points to the 'Deselect All' button: 'By default, search applies to all sections. To restrict search to just one or several sections, click Deselect All and then click only those sections you want to include in the search.'
- Recall previous searches:** A callout points to a small downward arrow icon on the right side of the search field: 'Recall previous searches (works across sessions).'
- Buttons:** 'Cancel' and 'OK' buttons are located at the bottom right of the dialog.

Search techniques

To search effectively, you have to strike a balance between *precision* (finding only the articles you want) and *recall* (finding all the articles that might related to your search).

You'll also want to find articles as quickly as possible.

Related Topics:

[Improving search precision](#)

[Improving search recall](#)

[Improving search speed](#)

Improving search precision

Use proximity search - If you want to find articles in which ISDN is closely associated with Internet, don't do this:

ISDN and Internet

Instead, do this:

ISDN within/30 Internet

which finds occurrences of *ISDN* within 30 words of *Internet*. Note that while the WITHIN button on the search dialog supplies 30 words as a default, you can be even more precise if you want:

ISDN within/10 Internet

Use phrase search - If you want to find articles on document management, don't do this:

document and management

Instead, do this:

document management

Use Include Sections - If you're looking for product information on laser printers, don't leave the search dialog at the default setting, which includes all the sections of BYTE. Instead, specify those sections likely to contain product information: What's New, Reviews, BYTE Lab Product Report.

Use AndNot - If you're looking for articles that are about Apple Computer's non-Macintosh products and technologies (e.g., OpenDoc, LaserWriter, Newton) try this:

Apple andnot Macintosh

Use title search - If you're looking for articles that are about OS/2, as opposed to those that only mention OS/2, click the Titles Only option in the search dialog.

Use table search - If you're looking for benchmarks or source code, click the Tables Only option in the search dialog.

Improving search recall

Use wildcard search - If you want to find articles that contain all of these phrases:

Ethernet switch switching Ethernet hub switched Ethernet

then do this:

Ethernet within/30 switch*

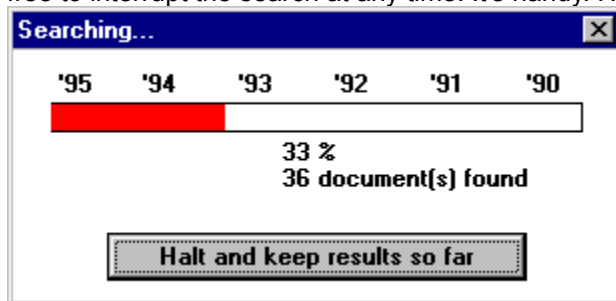
Note that only trailing wildcards will work.

Improving search speed

Use 1994-95 Only - If you're looking for recent articles, click this option on the search dialog. It's much faster to search just the 1994-95 part of the collection.

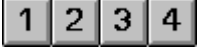
Use Title Search - It won't find as many articles as full text search, but it can be useful in some situations, and it's much faster than full text search.

Use Halt And Keep Results So Far - Even if you haven't checked 95-94 Only, you can interrupt search at any point *and retain all results found to that point*. What's more, since search proceeds in reverse chronological order, what you keep if you halt search are the most recent matching articles. The progress meter shows where you are on the 1995-1990 time line, and how many articles you've found so far. Feel free to interrupt the search at any time! It's handy. Here's what it looks like:



About navigation

The table of contents gives random access to documents. It summarizes the complete document collection when there is no search in effect. When search is in effect, the table of contents summarizes the search results.


You can control the table of contents globally with the  buttons, or locally by opening and closing individual items.


You can control the table of contents locally by using the right-mouse-button menu to fully expand individual nodes.

Use the  and

 buttons to step from article to article, and

 or

 to step from search hit to search hit.

Click on underlined hypertext links to jump to tables or images. Use the  button to jump back.

Anatomy of the table of contents

Only documents matching the search (in this case, the search phrase was "ethernet within/30 switch*") appear in the table of contents.

After a search, the table of contents defaults to level 3. Here the user has expanded to level four to reveal the tables, figures, and photos attached to the found documents.

Four documents matching the search were in the June 1995 issue

Three of those four were in the Reviews section

And all three, in this case, were in the same article

Here's an attached table

And here are attached images

Click here to mark the article Video Connections for print or export.

This icon signifies a main article with attachments.

This icon signifies a sidebar to the previous main article; this sidebar also has attachments.

Level	Item	Count
4	June 1995	4
3	Reviews	3
3	Local Air Networks	3
4	FILE TRANSFER PERFORMANCE AND ROAMING	
4	WaveLAN Radio-to-Radio Performance	
4	Test LAN Configuration	
4	Flawless Access Points	
4	Omnidirectional Antenna	
1	Commentary	1
1	ATM = After the Millennium	1
2	Ted Prince, President of Perth Ventures	
16	May 1995	16
11	State Of The Art	11
7	Video Connections	7
4	A Division of Labor	4
4	Multimedia Network	4
4	Networking Alternatives	4
4	THE LISUAL SUSPECTS	4

60 documents, in all, matched the search.

No documents are marked for print or export.

Navigational techniques

Navigation always works the same way, whether or not a search is in effect. You single-click on issue-level and section-level folders to open them, then single-click on the title of the article you want to read, print, or export. Or, single-click on the title of the image you want to view.

Related Topics:

[Navigating search results](#)

[Navigating hypertext](#)

Navigating search results

Usually, you'll be navigating a table of contents that has been reduced by search to a small number of articles. There are three ways to navigate the document collection:

Random access - Click on a document or attachment in the table of contents to jump to that item.

Sequential access by article - Use the *Next Document* and *Previous Document* controls. They're available three ways: on the toolbar, on the Edit menu, and on the F3 and F4 keys. When you go to a previous or next document, the table of contents pane automatically synchronizes with the document pane.

Sequential access by search hit - This is the most useful way to scan search results. Use the *Next Hit* and *Previous Hit* controls. They're available on the toolbar, the Edit menu, and the TAB/SHIFT-TAB keys. The cursor in the document pane moves from one paragraph containing a search hit to the next. When all hits in one article are exhausted, *Next Hit* and *Previous Hit* automatically take you to the next or previous document, synchronizing the table of contents and document panes accordingly.


Navigating hypertext

Words and phrases underlined in the document pane are hypertext links. Click on a link to jump to a table, figure, photo, or illustration within the current article.

To undo a hypertext jump, use the Go Back function. It's available on the toolbar, the Edit menu, and the BACKSPACE key.

Selecting what to print or export

To accumulate a list of documents to print or export, use the checkboxes at the left of the table of contents to mark those documents. (*Clear Selection* on the Edit menu empties that list.)

To begin a print operation, choose *Print* from the File menu, or click on the  toolbar button. To begin an export operation, choose *Export* from the File menu. In either case, the following dialog box appears:

